

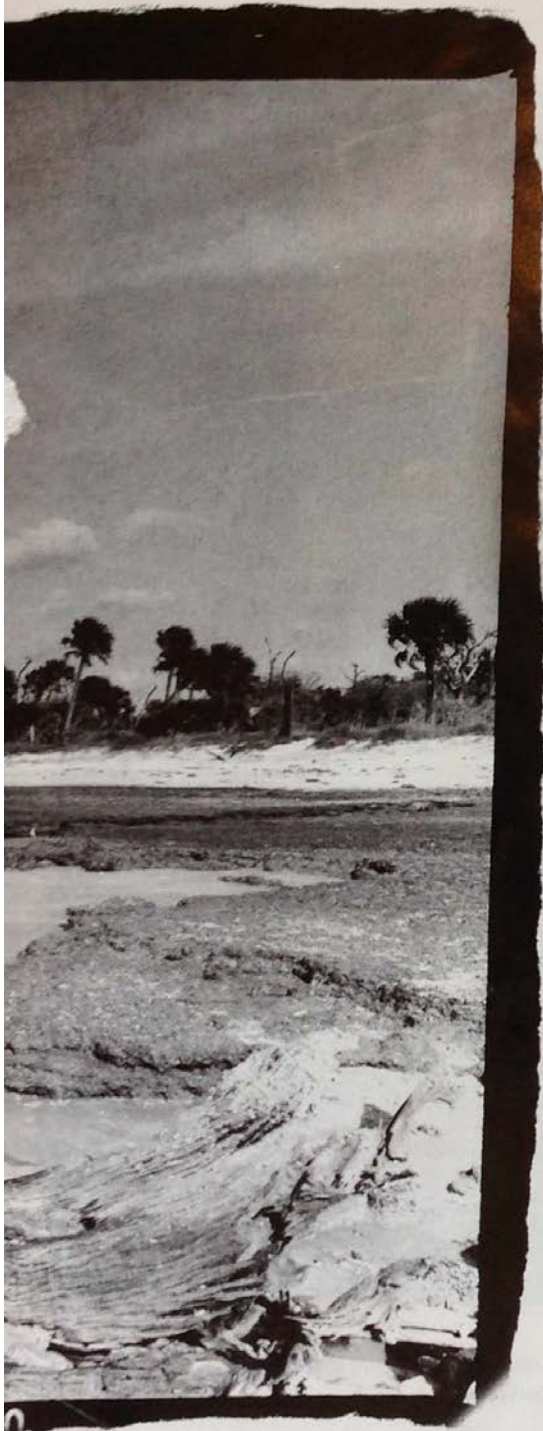


JULY 66 AUGUST

T&A

Captivating CAPERS

Photographer **TRIPP SMITH** hiked the unspoiled coastline of Capers, a barrier island north of Isle of Palms, documenting the intrinsic beauty of Boneyard Beach.





Time stands still on this uninhabited 2,000-acre barrier island, protected by the state's Heritage Trust. Nature alone transforms the landscape, attested by the tangles of fallen trees.



High tide encroaches into the palmettos and reocdes, slowly eroding the narrow open beach.

LEOPOLD PANEPHILIC

3741



Low tide reveals the imprints of past lives—shards of the island's maritime forest.



3/41

ILFORD PAN F PLUS

A silent sentinel clings to the edge, refusing to abandon his post.